

Reading and writing Music

CLEF

These symbols at the start tell you how high or low to play the notes

NOTE

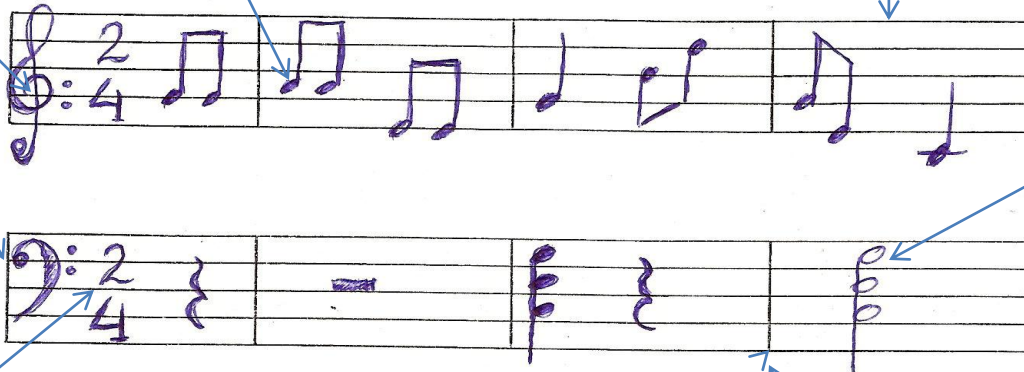
Each note is shown by a separate oval. The symbol also tells you how long or short the note is.

BEATS

Each bar has the same number of beats

STAVE

Notes can go on or between these five lines, or on separate short lines above or below.



CHORD

More than one note played together makes a chord

TIME SIGNATURE

The numbers tell you about the beats in a bar

PITCH

Notes higher up the stave have a higher pitch. Notes lower down have a lower pitch.

BAR

The vertical bar lines split the music into bars

Clefs

Clefs are the symbols that you find right at the start of most written music.

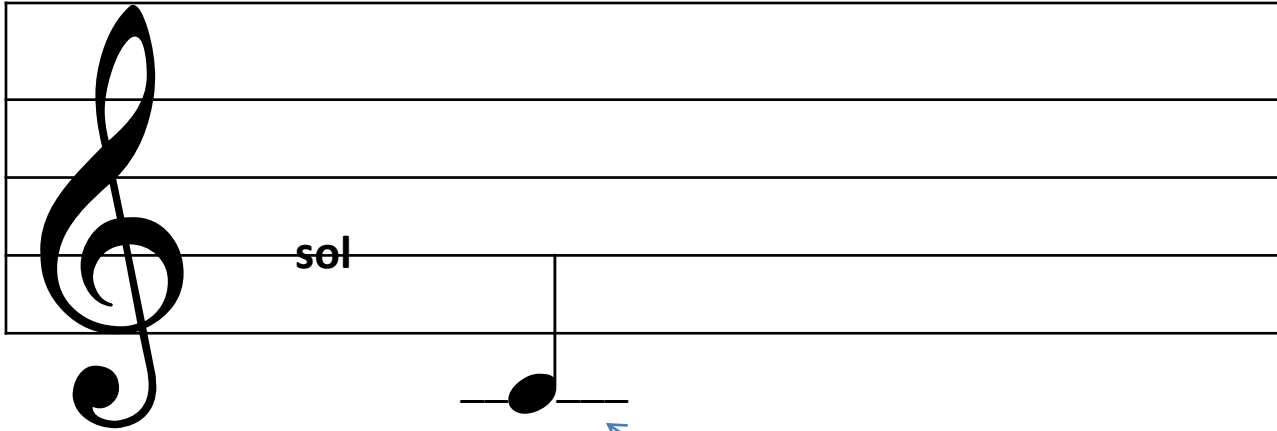


The treble clef is the most common clef.
It is used for quite high melody instruments: flute, clarinet, violin,...

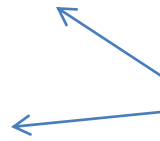


The bass clef is used for low, bass instruments like the tuba, trombone,...

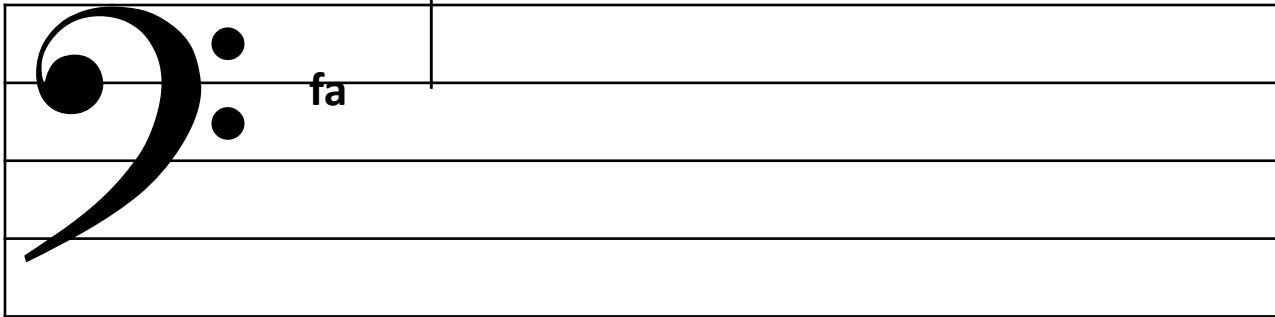
Treble clef



Middle C



Bass clef



Time Signatures

2

4

4
3

4

4

Those **two numbers** at the beginning of a piece of music tell you **how many beats** there are in a bar and **how long** they are.

If you listen a bit harder, you can hear that some beats are stronger than others. The strong beats come at regular intervals, usually every 2,3 or 4 beats. The strong beat is the first beat of each bar.

The time signature goes to the right of the clef. It's written using two numbers.



The top number tells you how many beats there are in each bar.

A musical staff with a treble clef is divided into two measures by a vertical line. The top measure contains a large red number '3' and the text 'Three beats' in red. The bottom measure contains a large black number '4'.

The bottom number tells you how long each beat is

A diagram showing two time signatures side-by-side. The first has a top number '3' and a bottom number '2'. The second has a top number '3' and a bottom number '4'.



HALF NOTE



QUARTER NOTE

A diagram showing two time signatures side-by-side. The first has a top number '3' and a bottom number '8'. The second has a top number '3' and a bottom number '16'.



EIGHTH NOTE



SIXTEENTH NOTE